



YASH PROMOTERS & BUILDERS

# Company Profile

“ Building Happiness,  
Since 1987.





# About Us



**Established 3 decades ago**, Yash Promoters and Builders arose as a shining example in the construction industry. Ever since then, the victories & lessons we've lived were reborn as experiences, inspiring us to build dreams where myriads reside.

Imbued with a higher purpose, we have lived up to our promise, which is "to sell in the market, you need to be the part of the crowd". The mystery of our success wasn't just founded on leveraging the demands, but more so in reaching out to the high-end expectations that helped us stoke a trailblazing standard. The grandeur of our ambitions & efforts entitled us to achieve the lauds of numerous people of PMC & PCMC in Pune.

Being a bearer of this prestige & a proud member of CREDAI Pune, we have rendered more than **20,000 families contended** with our jubilant efforts; including our legacy in Maharashtra, includes- Yash Elina, Yash Rhythm, Yashomangal, Yashopuram, Yash Platinum, Yash Garden, Yash Classic, Yash Wisteria, Yash Sankul, Yash Orchid, Yash Bindu, Yashashri, Yashogandha, etc. with more than 5k flats all over Pune.

We continue to lay an example of qualitative advancement for others to emulate And, the other sister concerns of Yash Promoters and Builders are Akshay Enterprises, Yashh Realtors.

# Work legacy

Apart from catering to the standards of evolving lifestyles of urban families, we have demonstrated excellent growth in value, thus giving buyers the dual-advantage of making proud as well as good investment. By connecting their emotions and securing their money by providing whatever was committed.



## Our Vision

To maintain a **good quality** & to deliver **best quality** management.

To transcend the average standards prevailing in the industry & deliver **over-the-top service** to all our clients.

To committedly **satisfy our customers** & society by **achieving excellence** in our quality of our designs, construction & maintenance work.

To provide **luxurious living** to sections of our society.

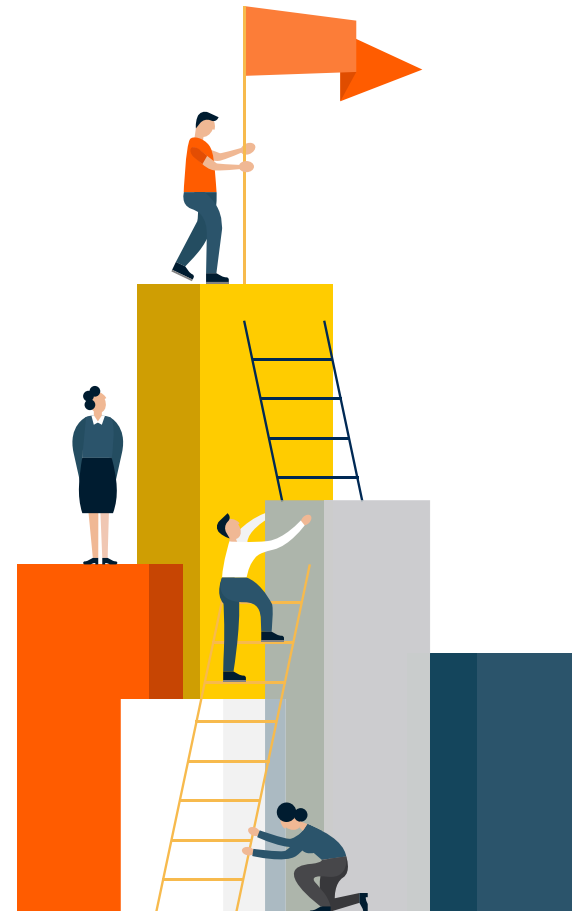


## Our Mission

To take advantage of the Group's collective resources - **brand, employee expertise**, pool of valued consultants and financial strength.

To set **high standards for safety**, both of our employees as well as the environment.

To recruit, develop and retain competent employees through training, empowerment, rewards and growth for everyone who is a part of **Yash Promoters and Builders**.



# Director Desk Content

## From The Director's Desk



### Mr. Ashok Chunilal Kataria

Founder & Director of Yash Promoters & Builders.

Mr. Ashok got his Degree in Civil Engineering from Pune in 1980. He is an Associate Member of Institute of Engineers, having more than 3 decades of experience in constructing residential & commercial complexes.

He started his career as a Project Engineer in 'M/s B. J. Shirke' - A well-known construction group in India.

### Efforts of pain are the Achievement that you gain.



His first independent construction project 'Darshan Nagri' was started in 1987 at Chinchwad with project cost estimated around Rs. 2.4 crores, having 50 residential units, which was successfully completed within a span of two years.

His creative values honored him with the "Bandhkam Vyavasayatil Bhushan" puraskar by the hand former Deputy CM Mr. Gopinath Munde. Also, with a "Precise and Quality Construction Work" award by the Anna Saheb Magar Social Sports Foundation, PCMC in the year 2003. Falicitated by CM Devendra Fadnavis recently for Yash Elina Project.

### Mr. Akshay Kataria

Director [B.E. (IT), Sc. MGT (UK)]

Managing Director of Yash Promoters & Builders, Akshay manages a wide portfolio spanning across Residential, Office Space, Retail and Social Infrastructure projects. He has been on the Board over a few years and has more valuable experience in the business industry. He has evolved group & involved in the formulation of corporate strategy and planning and overall execution and management of the company. He is also involved in the growth and diversification plans of the Company.

Akshay is an alumnus of Nottingham Trent University (United Kingdom) His international experience and exposure has helped the Group in differentiating itself and its offerings in the highly competitive market. He provides guidance on corporate strategy and planning so as to enable the group to continue its focus on growth & diversification.





# Projects Timeline

Yash Promoters and Builders were established in the year 1987, wherein we maneuverer an exponential number of projects with PMC and Pune, engaged in commercial site projects, which not only pioneered our prestige, but also greatly augmented our dominion capture over the market.

Sr. No	Project Name	Location	Completion Year
1	Darshan Nagari	Pimpri Chinchwad link Road	1989
2	Akshay Apartment	Gawade Colony, Opp Chinchwad Telco Gate, Chinchwad Pune	1990
3	Yashshri	S.No-309/6a/1, Pimprigaon CTS No-723	1991
4	Yashodhan	S. No-269/9 Pimpri Chinchwad Pune	1991
5	Yashowel	Tanji Nagar Pimpri Chinchwad Link Road	1991
6	Yashodeep	Shridhar Nagar CTS No-4370 Plot No.2, Nr. Sidharthnagar Garden, Chinchwad Pune	1992
7	Bindusagar	Bijli Nagar Near Giriraj Hsg Society Chinchwad Pune	1994
8	Pratikbindu	Bijli Nagar Near Giriraj Hsg Society Chinchwad Pune	1994
9	Yasho Bindu	Chinchwad	1994
10	Yashogandha	Keshav Nagar Nr, kakade Park Chinchwad Pune	1996
11	Yashganga	Keshav Nagar Nr, kakade Park Chinchwad Pune	1997
12	Yashopuram	Chinchwad	2001
13	Yashomangal	Chinchwad	2000
14	Yash Sankul	S. No - 16+17+18, Pimple Saudagar, Opp Swaraj Hotel, Pune	2008
15	Yash Classic	S. No - 120/7, CTS No-1328, Pashan Pune.	2007
16	Yash Garden	Plot No - 78, Sector No-1178, Indrayani Nagar, Bhosari	2007
17	Yash Wisteria	S. No-172/3/1, Wakad PCMC	2013
18	Yash Rhythm	Kondhwa	2010
19	Yash Platinum	Dhayari	2016
20	Yash Elina	Kothrud	2017
21	Yash Orchid	S. No - 53/12 53/5 Baner	2017

Completed  
Project



## YASH ELINA

3 & 5 BHK Luxurios Homes | Karve Nagar Kothrud

### Amenities & Specification



Swimming Pool



Amphi  
theatre



Gymnasium



Club House  
& Yoga



Roof top  
Party Lawn

### Key Distance

- Pune Railway Station:  
14 mins.
- Deccan Gymkhana:  
8 mins.
- Swargate:  
12 mins.
- Hinjewadi:  
25 mins.
- Pune Airport:  
32 mins.



Site Address: Yash Elina -karve Nagar, Kothrud, Pune, Maharashtra, India  
GPS Coordinates: 18.445958,73.806208



Completed  
Project



## YASH PLATINUM - 6 Tower Project

1 & 2 BHK Spacious Homes | Dhayari Pune

### Amenities & Specification



Multi-Purpose  
Hall



Landscape  
Garden



Gymnasium



Swimming Pool



Childrens  
Creation Area



Club House  
& Yoga



Temple

### Key Distance

- Pune Railway Station:  
30 mins.
- Kothrud:  
18 mins.
- Singhgad Road:  
5 mins.
- Swargate:  
22 mins.
- NIBM:  
28 mins.



Site Address: Yash Platinum - Opp Pari Company, Dhayari Pune,  
Maharashtra, India GPS Coordinates: 18.445958,73.806208



# Upcoming Project



## YASH FLORENCIA

2 BHK Green Homes | NIBM Annexe Kondhwa

### Amenities



Barbeque Area



Tree Hammock Garden



Ayurvedic Garden



Lantern Garden



Acupressure Track



Party Lawn



Jacuzzi & Spa Area



Gymnasium & Yoga



Landscape Area



Magnificent Club House



Children Play Area



Multi-Purpose Game Area

### Key Distance

Corinthians Club:

8 mins.

Bishops School,

Undri: 7 mins.

Vibgyor School:

7 mins.

Inox Multiplex @

Dorabjee Mall: 6 Mins

• Sanskriti School:

4 mins.

• Jyoti Restaurant

8 mins.

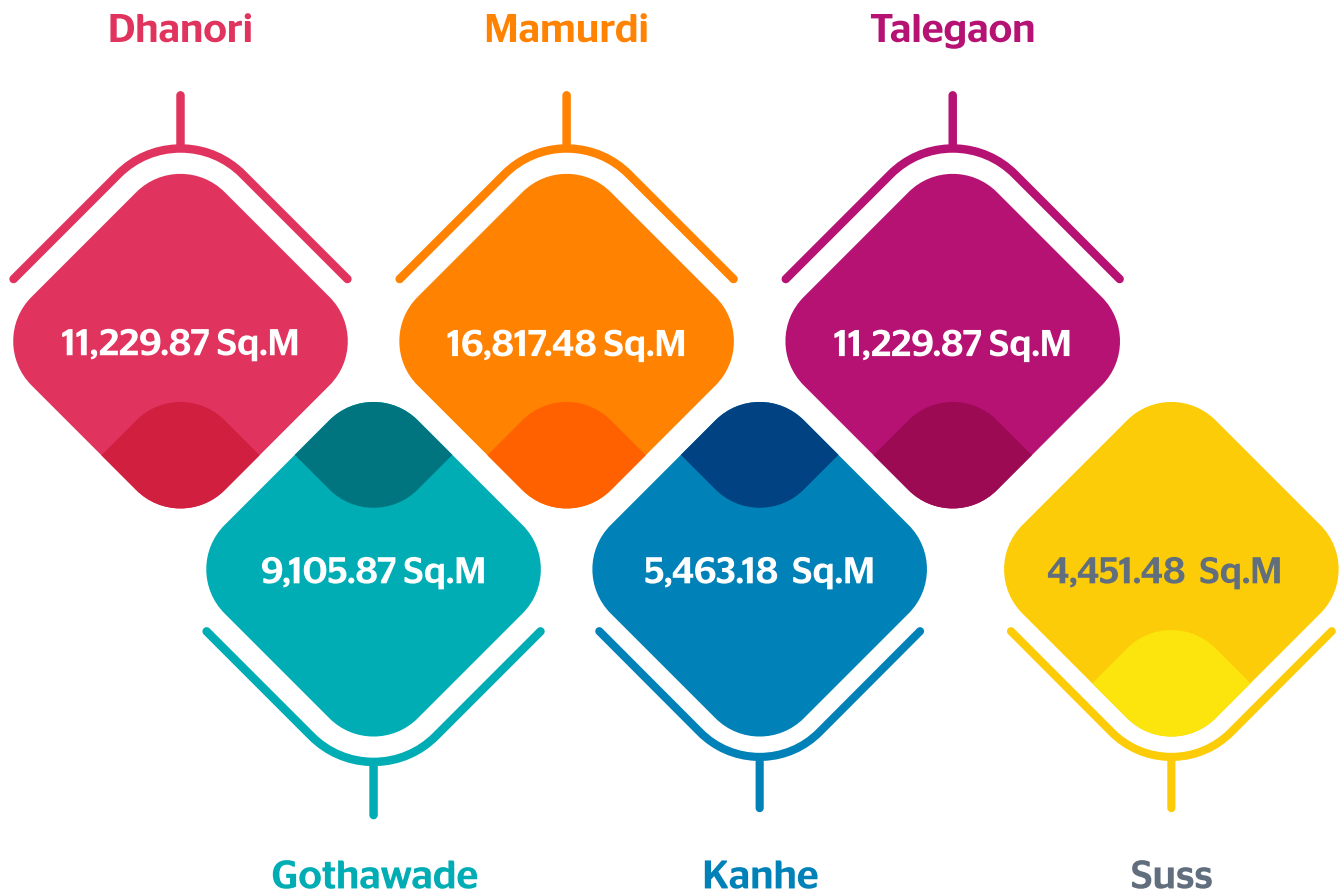


Site Address: Yash Florencia -Punyadham Ashram Road, Tyni Audyogic, Wasahat, NIBM Annexe, Kondhwa, Pune-411048 Maharashtra India



# Land-Parcel Across Pune & PCMC.

Upcoming Project



Yash Promoters and Builders Coming up with various projects in Coming years across the Pune and PCMC.

## Channel Partner model, strategy & opportunities

### Marketing Support

- Reinforce with customized advertising collaterals
- Reinforce & help in campaigns
- Secured Lead Management and record maintenance

### Sales & Lead Management Reinforce

- Dedicated Channel Partner Manager (Pilot) as single point of contact for Yash Promoters & Builder
- Dedicated closing manager & staff for top quality sales conversion & PR.
- Latest Infrastructure support with well-equipped tools.
- Site visit facilitation with exclusive Badges.

### CRM Assistance & Exclusive Channel Partner Recognition

- Dedicated channel partner helpline & assistance
- Timely payouts & continuous offers & incentives
- Timely follow-up session & business meets

## Channel Partner Business Model

1. Registration/Onboarding
2. Business strategy & Lead Management
3. Exclusive site visit & Performance Management
4. Commission & Incentives
5. Payment process/Pay out
6. Marketing & Creative support cycle
7. Payment receipts & documentations
8. Source Authentication
9. Training & Development



# Investor, stakeholders & NRI corner (B2B)

The Yash Promoters and Builders duly appreciates the value of all our stakeholders & thus, every decision we make is based on the principle of collective interest.

We objectify measures to ensure constant growth, with an aim to deliver a tremendous value to our investors.

Invest in the finest homes & grand avenues by Yash Promoters & Builders- Make right investments, by making right choices.



## Achievement

“Bandhkam Vavesayatil Bhushan in 2003”

By Annasheb Magar Social Sports Foundation PCMC.





YASH PROMOTERS & BUILDERS

“ Building Happiness,  
Since 1987.

**Address:**

Yash Promoters and Builders 3rd floor, Yash Elina,  
Business Bay, Opp karishma Society off karve Road , Kothrud,  
Pune - 411038 Maharashtra India

 : 020 25458300

 : [info@yashpromotersandbuilders.com](mailto:info@yashpromotersandbuilders.com)

 : [www.yashpromotersandbuilders.com](http://www.yashpromotersandbuilders.com)



\*Readers are advised to enquire and understand all terms and conditions prior initiating any purchase or availing the home loans. All property related queries shall be addressed solely to Yash Promoters and Builders. Each projects is separately being advertised by it's promoter company and that each project has a separate promoter company.